



Vogt AG Verbindungstechnik creating connections



EASYConnectors
LOCKConnectors
PINConnectors

Flat receptable

Plug-in sleeve

Pin connector

EASYconnectors

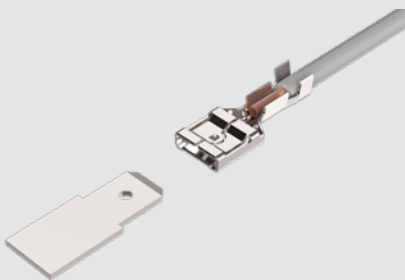


Maximum efficiency meets maximum reliability! The innovative rectangular terminal shape of the LOCKconnector ensures reduced insertion force combined with stable pull-out forces in accordance with the standard.

With an insertion depth that offers maximum flexibility and a clever self-locking mechanism that is confirmed by an audible 'click', this product is the perfect solution for demanding connection requirements.

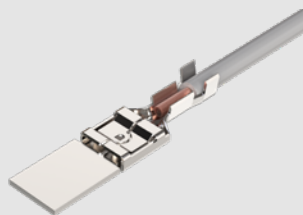
- **Easy unlocking:**
Easy to operate with or without insulation grommet.
- **Versatile application possibilities:**
Ideal for 'white goods', industrial applications and power and signal transmission.
- **High-performance materials:**
Temperature resistant up to 300° C and current carrying capacity up to 16 A.
- **Flexible packaging options:**
Available as reel, bulk goods on request

Faster connections, clever savings



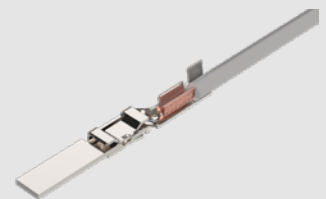
Reduced insertion force with constant safety

Two integrated latching points on the socket allow up to 50 % less insertion force compared to the DIN version. The high pull-out force remains fully standardised, ideal for efficient, fatigue-free installation.



Easy insertion thanks to clever design

The front section of the sleeve is designed in such a way that the connection practically engages by itself. The first few millimetres are used exclusively for locking, with almost no effort required and particularly user-friendly.



Low insertion depth and maximum flexibility

The compact rectangular design allows more connections in a small space. Despite the reduced insertion depth, all electrical and mechanical properties remain at DIN level, ideal for space-critical applications.

EASYconnectors | Programme overview



Flat receptacle
straight
2.8 | 0.5–1.0 mm²



Flat receptacle
straight
4.8 | 0.5–1.5 mm²



Flat receptacle
straight
6.3 | 0.5–1.5 mm²



Flat receptacle
90°
2.8 | 0.5–1.5 mm²



Flat receptacle
90°
4.8 | 0.5–1.5 mm²



Flat receptacle
90°
6.3 | 0.5–1.5 mm²

Maximum power. Minimum insertion force. Absolute safety.

Welcome to the future of connection technology. With the EASYconnector series, we are launching a completely new class of contacts onto the market, developed for maximum efficiency, uncompromising quality and noticeably easier handling. What was previously considered a contradiction in terms, namely low mating force combined with high electrical performance, is now a matter of course.

Our developers have created a solution that not only overcomes the limitations of existing technologies, but also sets new standards. EASYconnector stands for maximum conductivity, a perfect mechanical fit and a noticeably comfortable connection. EASYconnector is ideal for demanding applications in industry, automotive and electronics.

If you are looking for a connector that fits easily, holds securely and delivers maximum performance, then you have found it. EASYconnector was developed for the requirements of tomorrow. Already today.

Simple connection. Impressive technology.

With EASYconnector, every connection becomes an aha experience. You can feel the difference as soon as you plug it in for the first time. The specially developed geometry guides the plug into the socket as if by itself, with almost no effort and with high precision. No readjustment, no resistance, no play. Instead, a firm click that provides security.

The special feature: Two integrated retaining lugs ensure that every connection is firmly seated, regardless of how the plug is inserted. The result is a constant and reliable connection for series production or demanding installation under real conditions.

EASYconnector stands for intuitive handling, reduced wear and maximum process reliability. This is technology that thinks for itself.

Feature	Benefit
Rectangular low insertion force design	Noticeably easy plugging with full electrical performance
Intelligent front geometry	Quick, force-free insertion with a perfect fit
Two retaining lugs instead of one	Firm hold in any insertion direction for more safety, less risk
Exposed rear of socket	Flexible connection and protected mechanics for a long service life
B-crimp technology	Superior connection reliability compared to conventional roll crimping
Compatible with RAST-5	Ideally suited for standard industrial applications

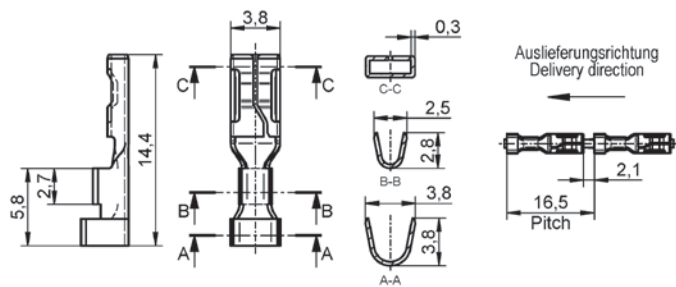
Equipped for every challenge

With variants from 2.8 mm to 6.3 mm, EASYconnector covers a wide range of applications and thus connects everything from fine electronics to powerful current contacts. Compact or powerful: the right solution is available.

Thanks to full compatibility with the RAST 5 standard, EASYconnector can be easily integrated into existing systems.

EASYconnector: flexible, reliable and future-proof.

EASYconnectors | Technical data



Plug size: 2.8 × 0.8 mm

Wire cross-section: 0.5–1.0 mm²

Conductor cross-section: 20–18 AWG

Insulating Ø: 1.8–3.3 mm

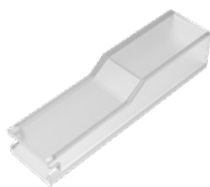
Material thickness: 0.3 mm

Flat receptacle 2.8

Art. No.	Material	Surface	Max. Temp.	Packaging	Piece / unit	Max. Rated current 0.50 0.75 1.00 [mm²]
376b0e08.60	Brass	blank	110°C	Reel*	15'000	6 A 8 A 8 A
376b0e08.68	Brass	pre-tinned	120°C	Reel*	15'000	
376b0e08.95	Steel	nickel-plated	300°C	Reel*	15'000	

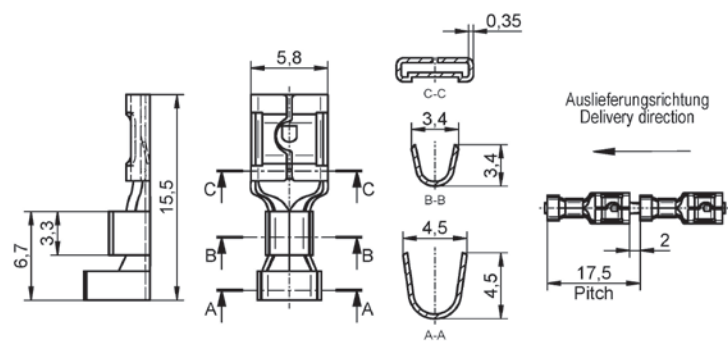
* Single/bulk goods on request

Accessories | Grommet for flat receptacle with plug size 2.8



Art. No.	Material	Colour	Flammability	Max. Temp.
376e.pa	PA66	Nature	850°	105°

EASYconnectors | Technical data



Plug size: 4.8 × 0.8 mm

Wire cross-section: 0.5–1.5 mm²

Conductor cross-section: 20–16 AWG

Insulating-Ø: 1.8–2.5 mm

Material thickness: 0.35 mm

Flat receptacle 4.8

Art. No.	Material	Surface	Max. Temp.	Packaging	Piece / unit	Max. Rated current
						0.50 0.75 1.00 1.50 [mm ²]
380c0e08.60	Brass	blank	110°C	Reel*	10'000	8 A 10 A 12 A 16 A
380c0e08.68	Brass	pre-tinned	120°C	Reel*	10'000	
380c0e08.95	Steel	nickel-plated	300°C	Reel*	10'000	

* Single/bulk goods on request

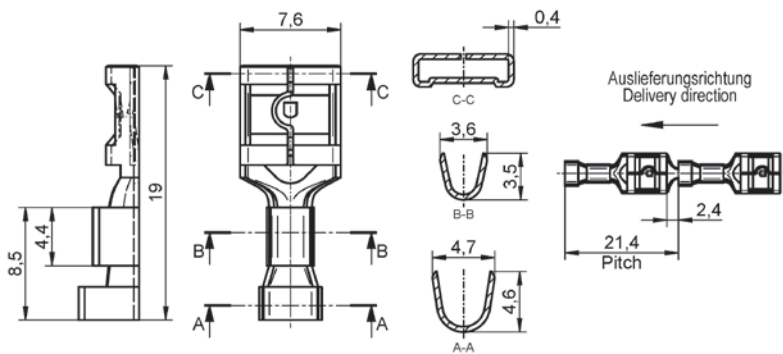
Accessories | Grommet for flat receptacle with plug size 4.8



Art. No.	Material	Colour	Flammability	Max. Temp.
380e.pa	PA66	Nature	850°	105°



EASYconnectors | Technical data



Plug size: 6.3 × 0.8 mm

Wire cross-section: 0.5–1.5 mm²

Conductor cross-section: 20–16 AWG

Insulating-Ø: 2.0–3.3 mm

Material thickness: 0.4 mm

Flat receptacle 6.3

Art. No.	Material	Surface	Max. Temp.	Packaging	Piece / unit	Max. Rated current
						0.50 0.75 1.00 1.50 [mm ²]
383c0e08.60	Brass	blank	110°C	Reel*	8'000	8 A 10 A 12 A 16 A
383c0e08.68	Brass	pre-tinned	120°C	Reel*	8'000	
383c0e08.95	Steel	nickel-plated	300°C	Reel*	8'000	

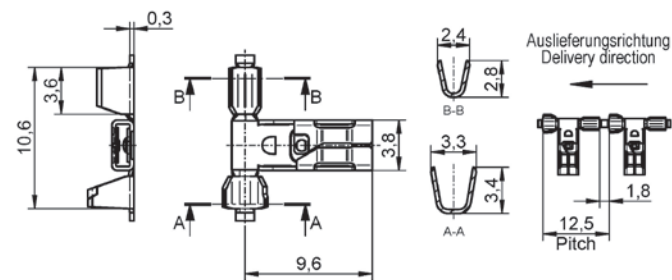
* Single/bulk goods on request

Accessories | Grommet for flat receptacle with plug size 6.3



Art. No.	Material	Colour	Flammability	Max. Temp.
383e.pa	PA66	Nature	850°	105°

EASYconnectors | Technical data



Plug size: 2.8 × 0.8 mm
Wire cross-section: 0.5–1.0 mm²
Conductor cross-section: 20–18 AWG

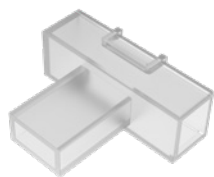
Insulating-Ø: 1.8–2.5 mm
Material thickness: 0.3 mm

Flat receptacle 2.8 | 90°

Art. No.	Material	Surface	Max. Temp.	Packaging	Piece / unit	Max. Rated current 0.50 0.75 1.00 [mm²]
376b0e08w.60	Brass	blank	110°C	Reel*	10'000	6 A 8 A 8 A
376b0e08w.68	Brass	pre-tinned	120°C	Reel*	10'000	

* Single/bulk goods on request

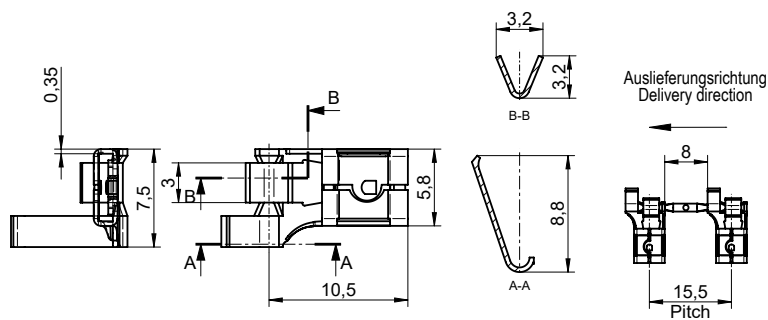
Accessories | Grommet for flat receptacle 90° with plug size 2.8



Art. No.	Material	Colour	Flammability	Max. Temp.
376ew.pa	PA66	Nature	N/A	N/A



EASYconnectors | Technical data



Plug size:	4.8 × 0.8 mm
Wire cross-section:	0.5–1.5 mm ²
Conductor cross-section:	20–16 AWG

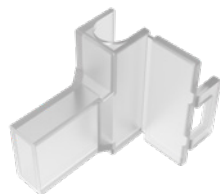
Insulating-Ø:	1.9–3.3 mm
Material thickness:	0.35 mm

Flat receptacle 4.8 | 90°

Art. No.	Material	Surface	Max. Temp.	Packaging	Piece / unit	Max. Rated current 0.50 0.75 1.00 1.50 [mm ²]
380c0e08w.60	Brass	blank	110°C	Reel*	5'000	8 A 10 A 12 A 16 A
380c0e08w.68	Brass	pre-tinned	120°C	Reel*	5'000	
380c0e08w.95	Steel	nickel-plated	300°C	Reel*	5'000	

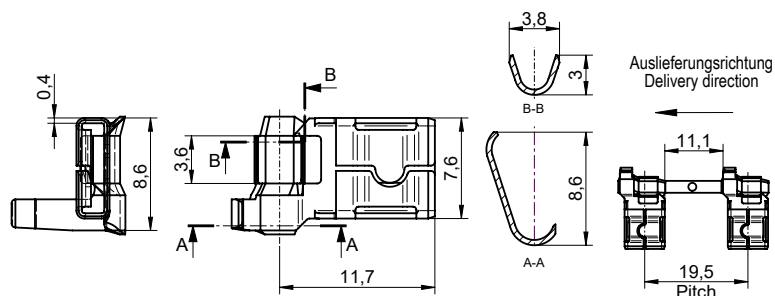
* Single/bulk goods on request

Accessories | Grommet for Flat receptacle 90° mit Plug size 4.8



Art. No.	Material	Colour	Flammability	Max. Temp.
380ew.pa	PA66	Nature	850°	105°

EASYconnectors | Technical data



Plug size: 6.3 × 0.8 mm

Wire cross-section: 0.5–1.5 mm²

Conductor cross-section: 20–16 AWG

Insulating-Ø: 1.9–3.3 mm

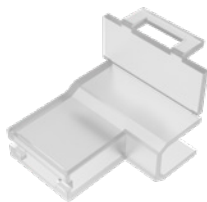
Material thickness: 0.4 mm

Flat receptacle 6.3 | 90°

Art. No.	Material	Surface	Max. Temp.	Packaging	Piece / unit	Max. Rated current
						0.50 0.75 1.00 1.50 [mm ²]
383c0e08w.60	Brass	blank	110°C	Reel*	3'500	8 A 10 A 12 A 16 A
383c0e08w.68	Brass	pre-tinned	120°C	Reel*	3'500	
383c0e08w.95	Steel	nickel-plated	300°C	Reel*	3'500	

* Single/bulk goods on request

Accessories | Grommet for Flat receptacle 90° mit Plug size 6.3



Art. No.	Material	Colour	Flammability	Max. Temp.
383ew.pa	PA66	Nature	N/A	N/A



LOCKconnectors

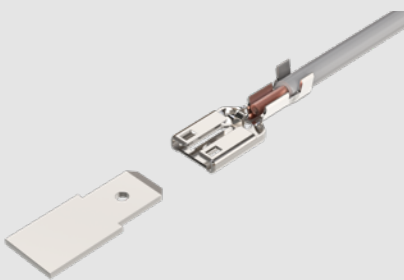


Maximum efficiency meets maximum reliability! The innovative rectangular terminal shape of the LOCKconnector ensures reduced insertion force combined with stable pull-out forces in accordance with the standard.

With an insertion depth that offers maximum flexibility and a clever self-locking mechanism that is confirmed by an audible 'click', this product is the perfect solution for demanding connection requirements.

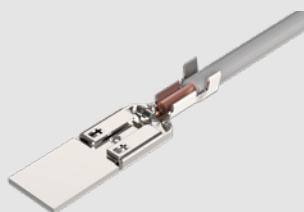
- **Easy plugging at full power**
Reduced insertion force of up to 50 %
Low insertion depth
For manual and automated processes
- **Secure self-locking**
Automatically engages with a click
Two locking points for a firm hold
Vibration-proof and reliable
- **Flexible unlocking:**
Convenient unlocking by grommet movement or by hand
For different installation concepts
Easy handling in practice

The connection that thinks for itself



Combination of comfort and performance

The rectangular shape with reduced insertion depth ensures space-saving connection options. At the same time, the insertion force remains low and the extraction force remains high in accordance with standards, making it perfect for series production and demanding installations.



Secure self-locking with acoustic control

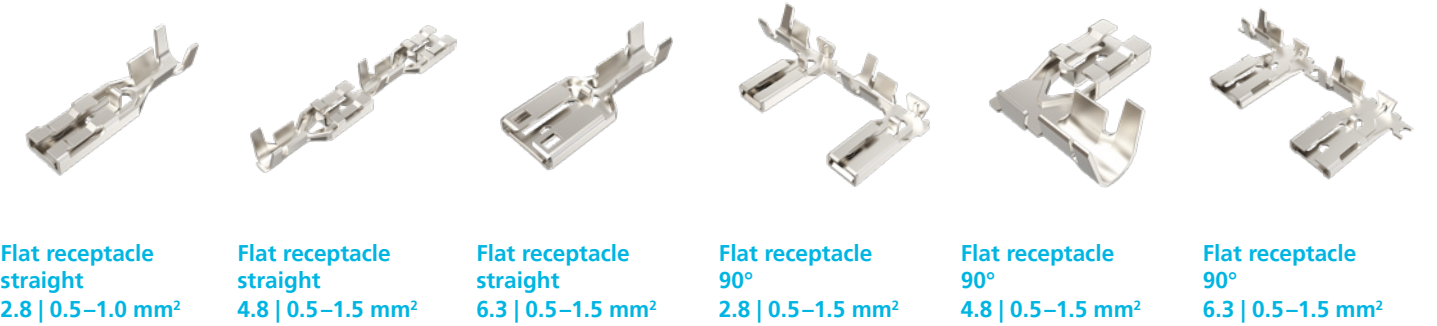
After insertion, the tab automatically locks into the sleeve and a clearly audible 'click' confirms the correct connection. This not only increases process reliability, but also efficiency during assembly.



Unlocking in two ways, with or without grommet

The connection can be unlocked flexibly: directly by pressing on the sleeve or by briefly moving the insulating grommet. This saves time and allows tool-free handling customised to your application.

LOCKconnectors | Programme overview



Efficient. Versatile. Self-locking.

LOCKconnector is more than just a contact, it is a sophisticated solution for modern connections. Developed for the highest demands in industrial applications, this series offers an innovative combination of reduced mating force, secure self-locking and robust design.

The self-locking mating geometry ensures maximum safety with minimum effort. Whether for device installation, automated production lines or manual assembly: LOCKconnector fits in effortlessly and remains reliably connected.

Intelligent design for tangible added value

Every insertion process with LOCKconnector feels well thought out. The optimised shape enables gentle, guided insertion without the need for force or adjustment. The connection locks automatically when fully inserted. An audible click confirms a secure fit.

Thanks to the locking points on both sides, the hold is always reliable, regardless of how the plug is inserted. And when disconnecting? Two different release types provide maximum flexibility, with or without insulating grommet, depending on the application.

A system that adapts to your processes and not the other way round.

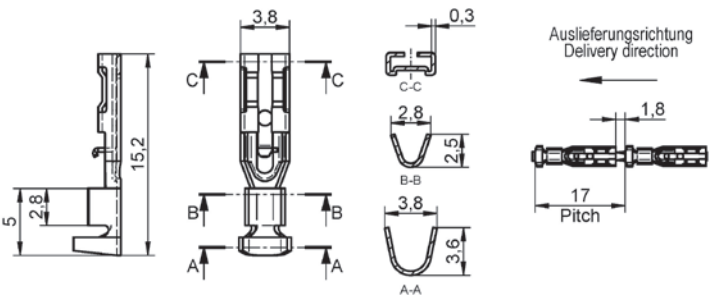
Versatility in every detail

LOCKconnector is available in various sizes from 2.8 mm to 6.3 mm and can therefore be used for a wide range of requirements, from signalling to power applications. The system is RAST 5 compatible and therefore fulfils common standard requirements for series production.

Whether in white goods, industrial systems or electronic components: LOCKconnector ensures clear, safe and low-maintenance connections, even at temperatures of up to 300° Celsius and currents of up to 16 A.

Feature	Benefit
Automatic self-locking	Secure latching without additional parts, can be checked visually and acoustically
Reduced insertion force	Up to 50 % less force required during insertion for perfect production processes
Two unlocking options	Flexibly detachable with or without insulating grommet
Robust values	Suitable for up to 300 °C and 16 A
Compatibility with RAST 5	Standardised integration into industrial systems
High-quality materials	Tin-plated brass or nickel-plated steel ensure a long service life

LOCKconnectors | Technical data



Plug size:	2.8 × 0.8 mm
Wire cross-section:	0.5–1.0 mm ²
Conductor cross-section:	20–18 AWG

Insulating-Ø:	N/A
Material thickness:	0.3 mm

Flat receptacle 2.8

Art. No.	Material	Surface	Max. Temp.	Packaging	Piece / unit	Max. Rated current 0.50 0.75 1.00 [mm ²]
376b0l08.60	Brass	blank	110°C	Reel*	15'000	6 A 8 A 8 A
376b0l08.68	Brass	pre-tinned	120°C	Reel*	15'000	
376b0l08.95	Steel	nickel-plated	300°C	Reel*	15'000	

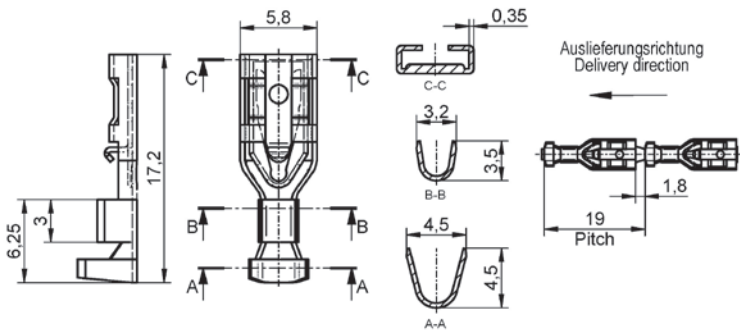
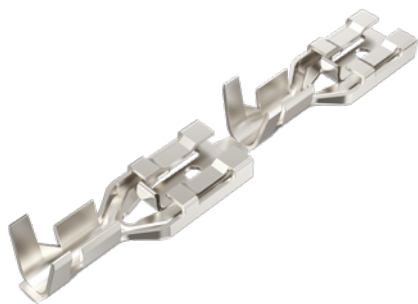
* Single/bulk goods on request

Accessories | Grommet for flat receptacle with plug size 2.8



Art. No.	Material	Colour	Flammability	Max. Temp.
376l.pa	PA66	Nature	850°	105°

LOCKconnectors | Technical data



Plug size: 4.8 × 0.8 mm

Wire cross-section: 0.5–1.5 mm²

Conductor cross-section: 20–16 AWG

Insulating-Ø: 1.8–2.3 mm

Material thickness: 0.35 mm

Flat receptacle 4.8

Art. No.	Material	Surface	Max. Temp.	Packaging	Piece / unit	Max. Rated current
						0.50 0.75 1.00 1.50 [mm ²]
380c0l08.60	Brass	blank	110°C	Reel	6'000	8 A 10 A 12 A 16 A
380c0l08.68	Brass	pre-tinned	120°C	Reel	6'000	
380c0l08.95	Steel	nickel-plated	300°C	Reel	6'000	

* Single/bulk goods on request

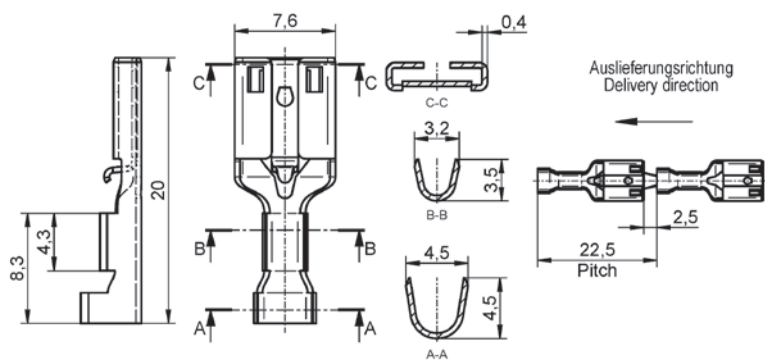
Accessories | Grommet for flat receptacle with plug size 4.8



Art. No.	Material	Colour	Flammability	Max. Temp.
380l.pa	PA66	Nature	850°	105°



LOCKconnectors | Technical data



Plug size: 6.3 × 0.8 mm

Wire cross-section: 0.5–1.5 mm²

Conductor cross-section: 20–16 AWG

Insulating-Ø: 2.0–3.3 mm

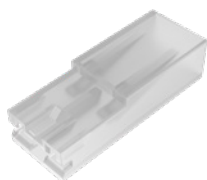
Material thickness: 0.4 mm

Flat receptacle 6.3

Art. No.	Material	Surface	Max. Temp.	Packaging	Piece / unit	Max. Rated current
						0.50 0.75 1.00 1.50 [mm ²]
383c0l08.60	Brass	blank	110°C	Reel*	6'000	8 A 10 A 12 A 16 A
383c0l08.68	Brass	pre-tinned	120°C	Reel*	6'000	
383c0l08.95	Steel	nickel-plated	300°C	Reel*	6'000	

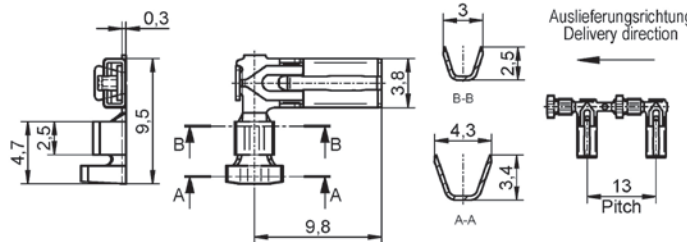
* Single/bulk goods on request

Accessories | Grommet for flat receptacle with plug size 6.3



Art. No.	Material	Colour	Flammability	Max. Temp.
383l.pa	PA66	Nature	850°	105°

LOCKconnectors | Technical data



Plug size:	2.8 × 0.8 mm
Wire cross-section:	0.5–1.0 mm ²
Conductor cross-section:	20–18 AWG

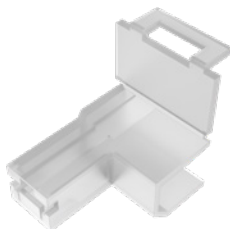
Insulating-Ø:	1.8–2.5 mm
Material thickness:	0.3 mm

Flat receptacle 2.8 | 90°

Art. No.	Material	Surface	Max. Temp.	Packaging	Piece / unit	Max. Rated current 0.50 0.75 1.00 [mm²]
376b0l08w.60	Brass	blank	110°C	Reel*	5'500	N/A
376b0l08w.68	Brass	pre-tinned	120°C	Reel*	5'500	
376b0l08w.95	Steel	nickel-plated	300°C	Reel*	5'500	

* Single/bulk goods on request

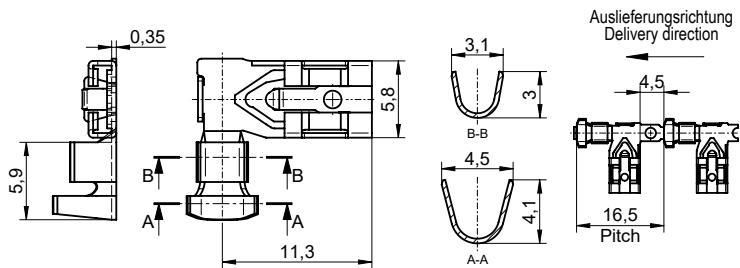
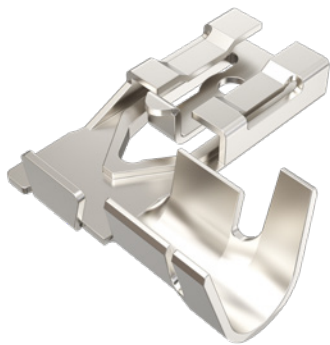
Accessories | Grommet for flat receptacle 90° with plug size 2.8



Art. No.	Material	Colour	Flammability	Max. Temp.
376lw.pa	PA66	Nature	N/A	N/A



LOCKconnectors | Technical data



Plug size:	4.8 × 0.8 mm
Wire cross-section:	0.5–1.5 mm ²
Conductor cross-section:	20–16 AWG

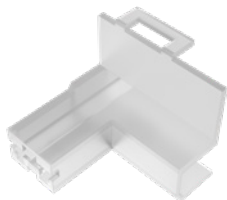
Insulating-Ø:	1.8–2.3 mm
Material thickness:	0.35 mm

Flat receptacle 4.8 | 90°

Art. No.	Material	Surface	Max. Temp.	Packaging	Piece / unit	Max. Rated current 0.50 0.75 1.00 1.50 [mm ²]
380c0l08w.60	Brass	blank	110°C	Reel*	3'000	8 A 10 A 12 A 16 A
380c0l08w.68	Brass	pre-tinned	120°C	Reel*	3'000	
380c0l08w.95	Steel	nickel-plated	300°C	Reel*	3'000	

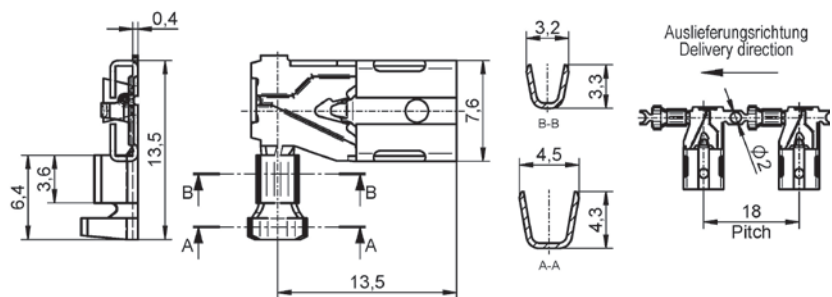
* Single/bulk goods on request

Accessories | Grommet for flat receptacle 90° with plug size 4.8



Art. No.	Material	Colour	Flammability	Max. Temp.
380lw.pa	PA66	Nature	850°	105°

LOCKconnectors | Technical data



Plug size:	6.3 × 0.8 mm
Wire cross-section:	0.5–1.5 mm ²
Conductor cross-section:	20–16 AWG

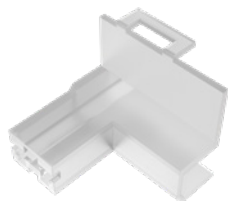
Insulating-Ø:	N/A
Material thickness:	0.4 mm

Flat receptacle 6.3 | 90°

Art. No.	Material	Surface	Max. Temp.	Packaging	Piece / unit	Max. Rated current
						0.50 0.75 1.00 1.50 [mm ²]
383c0l08w.60	Brass	blank	110°C	Reel*	3'000	8 A 10 A 12 A 16 A
383c0l08w.68	Brass	pre-tinned	120°C	Reel*	3'000	
383c0l08w.95	Steel	nickel-plated	300°C	Reel*	3'000	

* Single/bulk goods on request

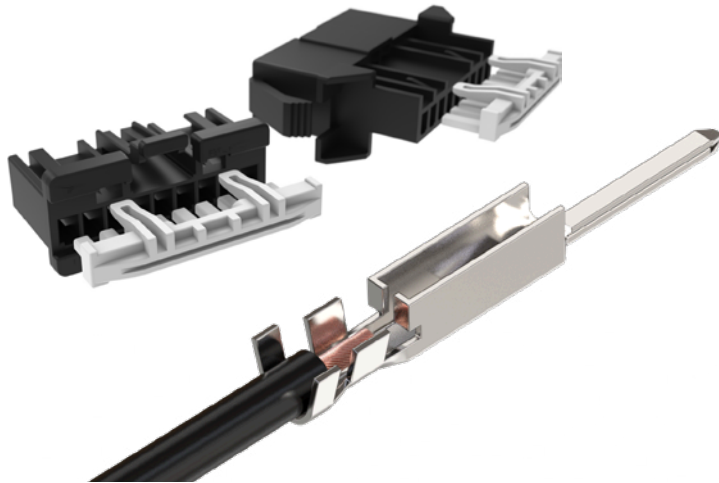
Accessories | Grommet for flat receptacle 90° with plug size 6.3



Art. No.	Material	Colour	Flammability	Max. Temp.
383lw.pa	PA66	Nature	850°	105°



PINconnectors



The PINconnector series was specially developed for modern applications with limited installation space. Despite its compact design, it offers a reliable electrical connection and impresses with its simple, safe handling.

The integrated lug in the receptacle creates a strong connection to the pin and guarantees maximum mechanical stability. The easy-to-install design can be inserted directly into insulation housings and is consistently designed for efficiency in automated production processes and maximum flexibility in modular systems.

- **Ultra-compact design:**
Perfect for applications with minimal space requirements
- **Reliable locking:**
Secure and firm connection
- **High current carrying capacity:**
Robust performance even under demanding conditions
- **Quick and easy to install:**
Fast, optimised assembly for manual and automated processes

Fast, compact and modular



Quick insertion in confined spaces

The slim design and simple geometry enable effortless insertion, even at connection points that are difficult to reach. Ideal for installations with a high mating frequency or limited space.



Compact design for maximum integration

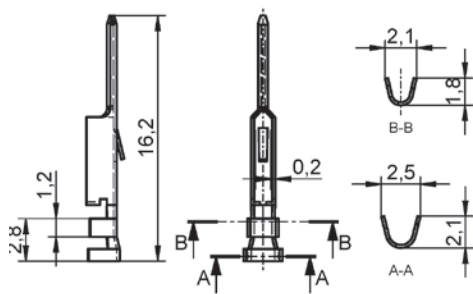
PINconnect has been specially developed for space-critical applications. The reduced size allows a dense arrangement of several connections without compromising on contact quality.



Multiway solutions for modular applications

PINconnect is ideal for multiple connections, such as those used in distribution strips, module connectors or control units. Thanks to the standardised geometry, individual combinations and modular system solutions can be easily implemented. The connection can be unlocked using the grommet.

PINconnectors | Technical data



Plug size:	0.63 × 0.63 mm
Wire cross-section:	0.25–0.5 mm ²
Conductor cross-section:	24–20 AWG

Insulating-Ø:	max. 1.6 mm
Material thickness:	0.2 mm

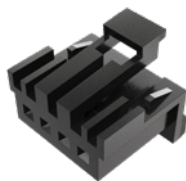
Pinconnector 0.63

Art. No.	Material	Surface	Max. Temp.	Packaging	Piece / unit	Max. Rated current 0.25 0.35 0.5 [mm ²]
310630m.68	Brass	pre-tinned	120°C	Reel*	10'000	1.5 A 2 A 3 A
310630m.48	K55	pre-tinned	150°C	Reel*	10'000	

* Single/bulk goods on request

Accessories | Housing to pin 4-fold 0.63

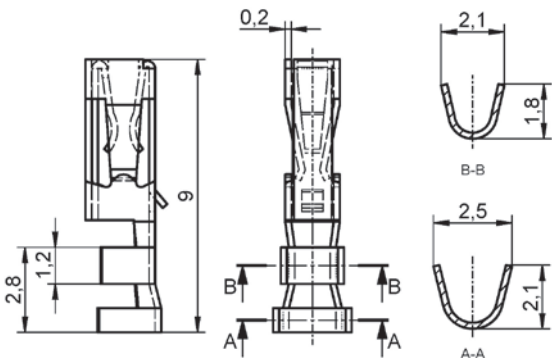
(5-, 6-, 8-, 9-, 10-, 12- and 16-way connections on request)



Art. No.	Material	Colour	Flammability	Max. Temp.
31063m4x.pa	PA66GF30	black	N/A	N/A



PINconnectors | Technical data



Plug size: 0.63 × 0.63 mm

Wire cross-section: 0.25–0.5 mm²

Conductor cross-section: 24–20 AWG

Insulating-Ø: max. 1.6 mm

Material thickness: 0.2 mm

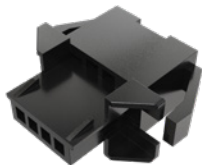
Plug-in sleeve for pin 0.63

Art. No.	Material	Surface	Max. Temp.	Packaging	Piece / unit	Max. Rated current 0.25 0.35 0.50 [mm²]
310630f.68	Brass	pre-tinned	120°C	Reel*	10'000	1.5 A 2 A 3 A
310630f.48	K55	pre-tinned	150°C	Reel*	10'000	

* Single/bulk goods on request

Accessories | Housing to pin 4-fold 0.63

(5-, 6-, 8-, 9-, 10-, 12- and 16-way connections on request)



Art. No.	Material	Colour	Flammability	Max. Temp.
31063f4x.pa	PA66GF30	black	N/A	N/A

Accessories | Retainer 4-fold 0.63

(5-, 6-, 8-, 9-, 10-, 12- and 16-way connections on request)



Art. No.	Material	Colour	Flammability	Max. Temp.
31063r4x.pa	PA66GF30	black	N/A	N/A

